

Meets the following EC Directives

- Electro-Magnetic Compatibility directive 2014/30/EU
- Low-voltage Directive 2014/35/EU
- Restriction of Hazardous Substances Directive 2011/65/EU

These instructions apply to the SALUS model stated above.

Warning

This product must be fitted by a competent person, and installation must comply with the guidance, standards and regulations applicable to the country or state where the product is installed. Failure to comply with the requirements of the relevant guidance, standards and regulations could lead to injury, death or prosecution.

Warning

Always isolate the AC mains supply before installing or working on any components that require 230 V AC 50Hz supply.

Warning

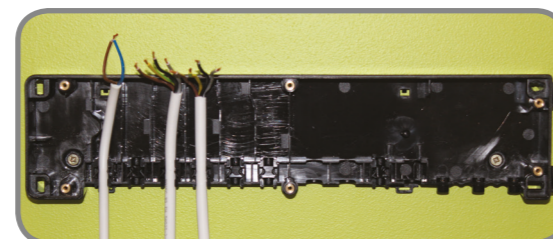
The earth terminals on the KL08NSB are for earth parking only. These terminals provide no earth protection.

For PDF Installation guide go to www.salus-controls.com

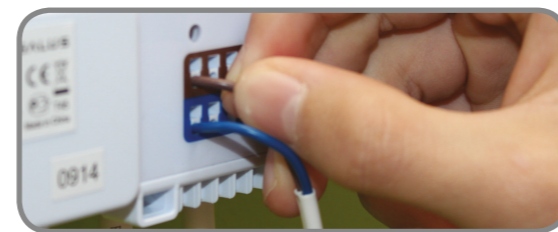
1 Remove the plastic cover. Open (and close) the four white screws with a quarter turn only. Note that screws on opposite sides turn in the opposite direction.



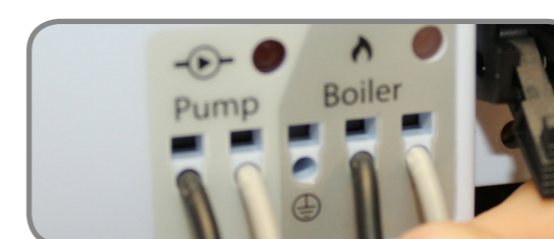
5 Clip all power and thermostat cables into their correct positions. The following shows the power, zone 1, and 2 thermostat cables in position:



9 Push the actuator wires into the round holes at the bottom of the KL08NSB. You can connect up to four actuators in each zone.



12 Push in the wires for a pump and boiler (if applicable) at the bottom right of the KL08NSB. Pump and boiler switching is volt free. **VOLT FREE**



2 Remove the white terminal connection board.



6 Replace the white terminal connection board.



10 Make sure there is a fuse in the fuse holder.



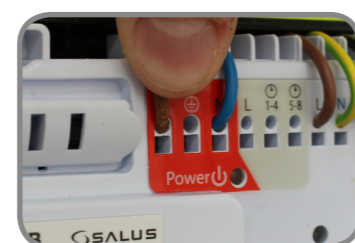
13 Attach the red strain-relieving strip using the three screws to secure the pump and boiler wires to the bottom side of the KL08NSB.



3 Attach the back of the KL08NSB to the DIN rail or wall.



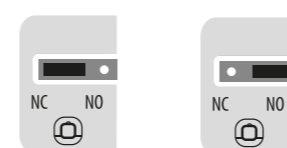
7 Bend over and push the power wires into the round power holes.



11 Set the actuator and boiler delay jumpers at the top right of the KL08NSB.

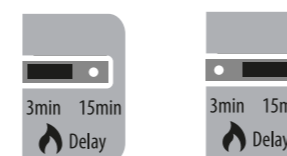
Type of Actuator

The default setting for the type of actuator is normally closed (NC). To change this setting to normally open (NO), carefully remove the jumper and re-insert it in the other position as shown below. **Note** that the actuator setting and thermostat setting must be the same.



Jumper Settings/Positions for Pump/Boiler On/Off Delay

The pump/boiler on delay and the pump off delay are fixed at three minutes. The default setting for the boiler off delay is also three minutes, but can be changed to 15 minutes. To do this, carefully remove the jumper and re-insert it in the other position as shown below:

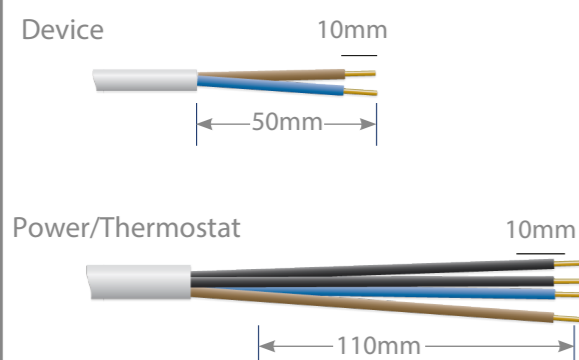


Note: the red reset button to the right of the boiler delay jumpers. Using a suitable tool, press this button at any time to reset the KL08NSB back to factory default settings.

14 Replace the plastic cover.



4 Cut the power, thermostat and device cables to length.



8 Bend over and push all thermostat wires into the round holes at the top of the KL08NSB.



15 Switch on mains power supply to the unit. The red LED comes on.



Installing and Connecting the KL08NSB

Use the KL08NSB wiring centre to simply and safely connect thermostats and corresponding thermal actuators. It can have three different physical configurations:

- Two groups of V30 thermostats, each group having up to four thermostats.
- Three groups of V30 thermostats with a KL04NSB extension attached, each group having up to four thermostats.
- A VS30 master thermostat controlling up to seven VS35 slave thermostats. For this configuration, you must make a bridge between grey positions 1-4 and 5-8. If a KL04NSB extension is attached to the KL08NSB, this is not included in this configuration and another VS30 master thermostat will control the VS35 slaves connected to the KL04NSB on zones 9 to 12.

Install the KL08NSB only in dry and closed interior rooms. Relative air humidity in the room may not exceed 95%. Clean the KL08NSB only with a dry and soft cloth. Do not use solvents or aggressive cleaning agents.

LED indications

Name	Colour	Meaning
Power	●	KL08NSB is supplied with 230V power
Zone 1 actuators	●	Demand from zone 1 thermostat: actuator open
Zone 2 actuators	●	Demand from zone 2 thermostat: actuator open
Zone 3 actuators	●	Demand from zone 3 thermostat: actuator open
Zone 4 actuators	●	Demand from zone 4 thermostat: actuator open
Zone 5 actuators	●	Demand from zone 5 thermostat: actuator open
Zone 6 actuators	●	Demand from zone 6 thermostat: actuator open
Zone 7 actuators	●	Demand from zone 7 thermostat: actuator open
Zone 8 actuators	●	Demand from zone 8 thermostat: actuator open
Pump	●	Pump on
Boiler	●	Boiler on